



# **EZ GEAR WINCH**

**sales@doleco-usa.com**

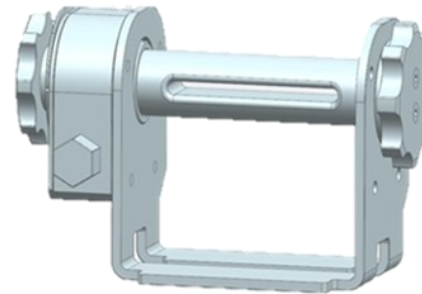
**1-203-440-1940**

## **Product introduction:**

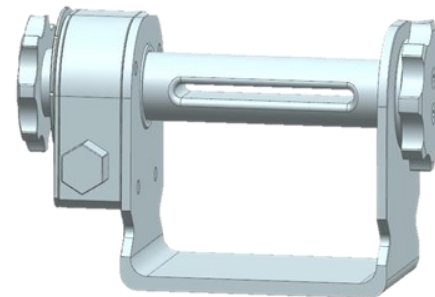
This patented, innovative gear drive winch has a 22:1 gear ration which produces extreme high efficiency. It's Compact design, labor-saving operation make it suitable for all kinds of environments.

## **Operational Considerations:**

- Make sure the straps are intact before using.
- Regularly inspect straps, if necessary, replace when out of service
- Do not exceed the maximum load capacity
- Use winch handle to loosen or tighten the strap. Use of other tools may damage and shorten the service life and will void the warranty.



PN 28120054 Double L Slider



PN 28120054 C-Channel Slider



PN 28200010 Winch Handle

## **Product Information:**

**Working load limit 6,600 lbs.3,000kgs**

**Weight: 13.45 lbs. 6.1 kgs.**

**Suitable for all kinds of environments**

**Recommended grease - Showa Shell  
Alvania RA-J Grease, from -40 C degree  
to 130 C degree**

## Operating Instructions:

- Turn the big handwheel to tighten the straps
- Pull the Small handwheel and rotate to the locking position.
- Using the winch handle , tighten the strap (Tension force less than 2.5 tons)
- Use the Winch Handle to release the tension on the strap.
- Pull the Small Handwheel and rotate to the release position (Small handwheel extends out of gear body)

